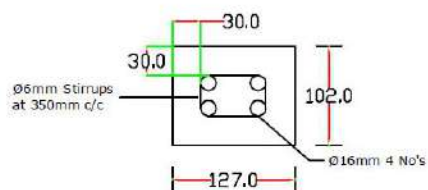


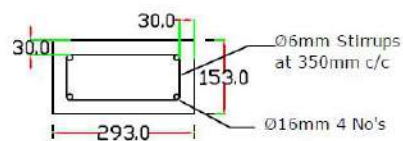
FRONT VIEW

END VIEW

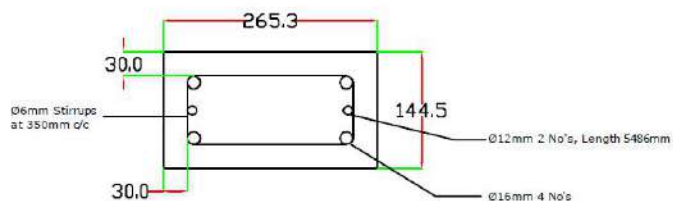
SECTIONAL ELEVATION



TOP SECTION



BOTTOM SECTION



SECTION AT GL

Note:

1. Cement Concrete Grade: M25
2. Steel Grade: TOR 50
3. Minimum Concrete Cover: 30mm
4. Approx. Quantity of Concrete: 0.264 cu.m(incl.reinf)
5. Bundled Bars Shall be tied together with welding to ensure the bars remaining together
6. Cement: 78.09kg/Pole
7. Weight of Pole: 595.2kg

Details of Reinforcement:

1. 4 Nos Ø16mm RODS EACH 9.10M
2. 2 Nos Ø12mm RODS EACH 5.486M
3. 27 Nos Ø6mm RODS - Rings

REINFORCEMENT DETAILS OF 9.14 M/256 KG R.C.C. POLE WITH FACTOR OF SAFETY 2.5

All dimension are in mm